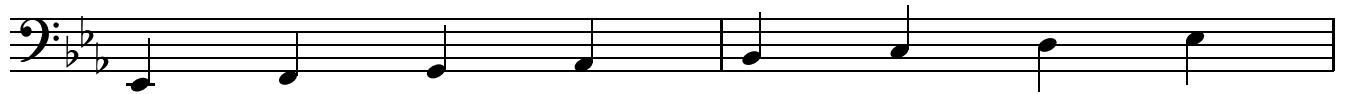


E♭ SIGHT-READING + RHYTHM EXERCISES

Level 1

Bass Clef Instruments - Lower Octave - "C" Scale



All of the following exercises utilize notes from the key of "E♭".

The quarter rest is equivalent in value to a quarter note. (1 beat)

When writing in the counts, you would write the number for rests ABOVE the rest.

Also make sure not to actually say the number associated with the rest, just THINK it.

3 **A** 4 3

Musical staff A in bass clef, key of E♭, 4/4 time. It contains 12 measures. The first measure has a quarter note C2, a quarter note D2, and a quarter rest. The second measure has a quarter note E2, a quarter note F2, and a quarter rest. The third measure has a quarter note G2, a quarter note A2, and a quarter rest. The fourth measure has a quarter note B2, a quarter note C3, and a quarter rest. The fifth measure has a quarter note D2, a quarter note E2, and a quarter rest. The sixth measure has a quarter note F2, a quarter note G2, and a quarter rest. The seventh measure has a quarter note A2, a quarter note B2, and a quarter rest. The eighth measure has a quarter note C3, a quarter note B2, and a quarter rest. The ninth measure has a quarter note A2, a quarter note G2, and a quarter rest. The tenth measure has a quarter note F2, a quarter note E2, and a quarter rest. The eleventh measure has a quarter note D2, a quarter note C2, and a quarter rest. The twelfth measure has a quarter note B1, a quarter note A1, and a quarter rest. Rhythmic counts are written below the staff: 1 2 + 3, 1 + 2, 4.

7 **B**

Musical staff B in bass clef, key of E♭, 4/4 time. It contains 12 measures. The first measure has a quarter note C2, a quarter note D2, a quarter note E2, and a quarter rest. The second measure has a quarter note F2, a quarter note G2, a quarter note A2, and a quarter rest. The third measure has a quarter note B2, a quarter note C3, a quarter note D2, and a quarter rest. The fourth measure has a quarter note E2, a quarter note F2, a quarter note G2, and a quarter rest. The fifth measure has a quarter note A2, a quarter note B2, a quarter note C3, and a quarter rest. The sixth measure has a quarter note D2, a quarter note E2, a quarter note F2, and a quarter rest. The seventh measure has a quarter note G2, a quarter note A2, a quarter note B2, and a quarter rest. The eighth measure has a quarter note C3, a quarter note B2, a quarter note A2, and a quarter rest. The ninth measure has a quarter note G2, a quarter note F2, a quarter note E2, and a quarter rest. The tenth measure has a quarter note D2, a quarter note C2, a quarter note B1, and a quarter rest. The eleventh measure has a quarter note A1, a quarter note G1, a quarter note F1, and a quarter rest. The twelfth measure has a quarter note E1, a quarter note D1, a quarter note C1, and a quarter rest.

11 **C**

Musical staff C in bass clef, key of E♭, 4/4 time. It contains 12 measures. The first measure has a quarter rest, a quarter note C2, a quarter note D2, and a quarter note E2. The second measure has a quarter rest, a quarter note F2, a quarter note G2, and a quarter note A2. The third measure has a quarter rest, a quarter note B2, a quarter note C3, and a quarter note D2. The fourth measure has a quarter rest, a quarter note E2, a quarter note F2, and a quarter note G2. The fifth measure has a quarter rest, a quarter note A2, a quarter note B2, and a quarter note C3. The sixth measure has a quarter rest, a quarter note D2, a quarter note E2, and a quarter note F2. The seventh measure has a quarter rest, a quarter note G2, a quarter note A2, and a quarter note B2. The eighth measure has a quarter rest, a quarter note C3, a quarter note B2, and a quarter note A2. The ninth measure has a quarter rest, a quarter note G2, a quarter note F2, and a quarter note E2. The tenth measure has a quarter rest, a quarter note D2, a quarter note C2, and a quarter note B1. The eleventh measure has a quarter rest, a quarter note A1, a quarter note G1, and a quarter note F1. The twelfth measure has a quarter rest, a quarter note E1, a quarter note D1, and a quarter note C1.

15 **D**

Musical staff D in bass clef, key of E♭, 4/4 time. It contains 12 measures. The first measure has a quarter note C2, a quarter note D2, a quarter note E2, and a quarter rest. The second measure has a quarter note F2, a quarter note G2, a quarter note A2, and a quarter rest. The third measure has a quarter note B2, a quarter note C3, a quarter note D2, and a quarter rest. The fourth measure has a quarter note E2, a quarter note F2, a quarter note G2, and a quarter rest. The fifth measure has a quarter note A2, a quarter note B2, a quarter note C3, and a quarter rest. The sixth measure has a quarter note D2, a quarter note E2, a quarter note F2, and a quarter rest. The seventh measure has a quarter note G2, a quarter note A2, a quarter note B2, and a quarter rest. The eighth measure has a quarter note C3, a quarter note B2, a quarter note A2, and a quarter rest. The ninth measure has a quarter note G2, a quarter note F2, a quarter note E2, and a quarter rest. The tenth measure has a quarter note D2, a quarter note C2, a quarter note B1, and a quarter rest. The eleventh measure has a quarter note A1, a quarter note G1, a quarter note F1, and a quarter rest. The twelfth measure has a quarter note E1, a quarter note D1, a quarter note C1, and a quarter rest.

19 **E**

Musical staff E in bass clef, key of E♭, 4/4 time. It contains 12 measures. The first measure has a quarter note C2, a quarter rest, a quarter note D2, and a quarter note E2. The second measure has a quarter note F2, a quarter rest, a quarter note G2, and a quarter note A2. The third measure has a quarter note B2, a quarter rest, a quarter note C3, and a quarter note D2. The fourth measure has a quarter note E2, a quarter rest, a quarter note F2, and a quarter note G2. The fifth measure has a quarter note A2, a quarter rest, a quarter note B2, and a quarter note C3. The sixth measure has a quarter note D2, a quarter rest, a quarter note E2, and a quarter note F2. The seventh measure has a quarter note G2, a quarter rest, a quarter note A2, and a quarter note B2. The eighth measure has a quarter note C3, a quarter rest, a quarter note B2, and a quarter note A2. The ninth measure has a quarter note G2, a quarter rest, a quarter note F2, and a quarter note E2. The tenth measure has a quarter note D2, a quarter rest, a quarter note C2, and a quarter note B1. The eleventh measure has a quarter note A1, a quarter rest, a quarter note G1, and a quarter note F1. The twelfth measure has a quarter note E1, a quarter rest, a quarter note D1, and a quarter note C1.

23 **F**

Musical staff F in bass clef, key of E♭, 4/4 time. It contains 12 measures. The first measure has a quarter note C2, a quarter note D2, a quarter note E2, and a quarter rest. The second measure has a quarter note F2, a quarter note G2, a quarter note A2, and a quarter rest. The third measure has a quarter note B2, a quarter note C3, a quarter note D2, and a quarter rest. The fourth measure has a quarter note E2, a quarter note F2, a quarter note G2, and a quarter rest. The fifth measure has a quarter note A2, a quarter note B2, a quarter note C3, and a quarter rest. The sixth measure has a quarter note D2, a quarter note E2, a quarter note F2, and a quarter rest. The seventh measure has a quarter note G2, a quarter note A2, a quarter note B2, and a quarter rest. The eighth measure has a quarter note C3, a quarter note B2, a quarter note A2, and a quarter rest. The ninth measure has a quarter note G2, a quarter note F2, a quarter note E2, and a quarter rest. The tenth measure has a quarter note D2, a quarter note C2, a quarter note B1, and a quarter rest. The eleventh measure has a quarter note A1, a quarter note G1, a quarter note F1, and a quarter rest. The twelfth measure has a quarter note E1, a quarter note D1, a quarter note C1, and a quarter rest.